



6501 Shaded Swing, left

Here's a new version of our magical shaded sweater, using Mocha Lace Wool at the bottom and gradually changing to Woodlands Delicato. More luxurious than 5701, this version has deeply fluted ribs and tons of swing, with a silky, draped hand.

Sizes: P/S (M/L, XL) finished bust approx 36 (41, 44)" slightly stretched, hem approx 20" wider
Lacewool, 3 (3, 4) A ; Delicato, 4 (4, 5) B

6502 Windward Waves, right

Intriguing construction uses increases, decreases & modified short rows for a landscape of stripes. New cotton/rayon Windward has a soft, supple hand.

Sizes: S (M, L, XL) Finished bust: 38 (42, 46, 50)"
4 (4, 5, 5) Windward Slate
4 (4, 5, 5) Windward Denali



6503 Tencel Waves, left

Using the same construction as 6502, our tee is a slightly smaller gauge in cool, silky Tencel. Less contrasting colors lend a more subtle over-all effect.

Either style can easily become tee or cardigan simply by working the fronts separately or together, using the other pattern as a guide.

Sizes: S (M, L, 1X, 2X)
Finished bust approx: 36 (38, 42, 46, 50)"
4 (5, 5, 6, 6) Tencel™ Tape 405
4 (5, 5, 6, 6) Tencel™ Tape Playa



6504 Breeze Jacket, left

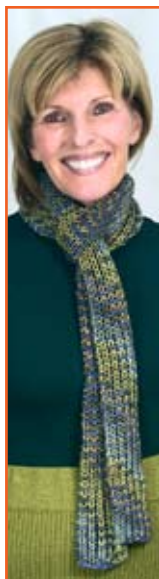
Soft, pliable Windward gains structure here through the strategic use of Linen Stitch and Half Linen Stitch for neat waist shaping and slightly belled lower sleeves. Shown in Shale.

Sizes: P (S, M, L, XL) Finished bust approx 33 (36, 38, 42, 46)" ;
hem approx 34 (38, 41, 46, 50)"
4 (5, 5, 6, 7) Windward

6505 Madison Scarf, right

Luxurious new Madison works up quickly into a one-skein Fisherman's Ribbed scarf.

Long and skinny, the scarf is designed to showcase our long runs of clear, crisp colors with a slightly diagonal patterning.



6506 Shaded Cardigan, right

Lush Delicato works up quickly held three strands together. Shade easily from one *Layers™* color to another for a soft painterly effect.

Sizes: P (S, M, L, XL)
finished bust: 36 (39, 42, 45, 50)"
2 (3, 3, 4, 4) Delicato Olivine A
2 (3, 3, 4, 4) Delicato Jasper B

